



ZQ127-25
Drill Pipe Power Tong

Parts List and Drawings

Jiangsu Rushi Machinery Co., Ltd.

Add.: No.60 Weihai North Road, Bencha, Rudong, Jiangsu 226406

Tel.: 0513-84890912, 84890901

Fax.: 0513-84821168

<http://www.jsrushi.com>

E-mail: rszlg@jsrushi.com

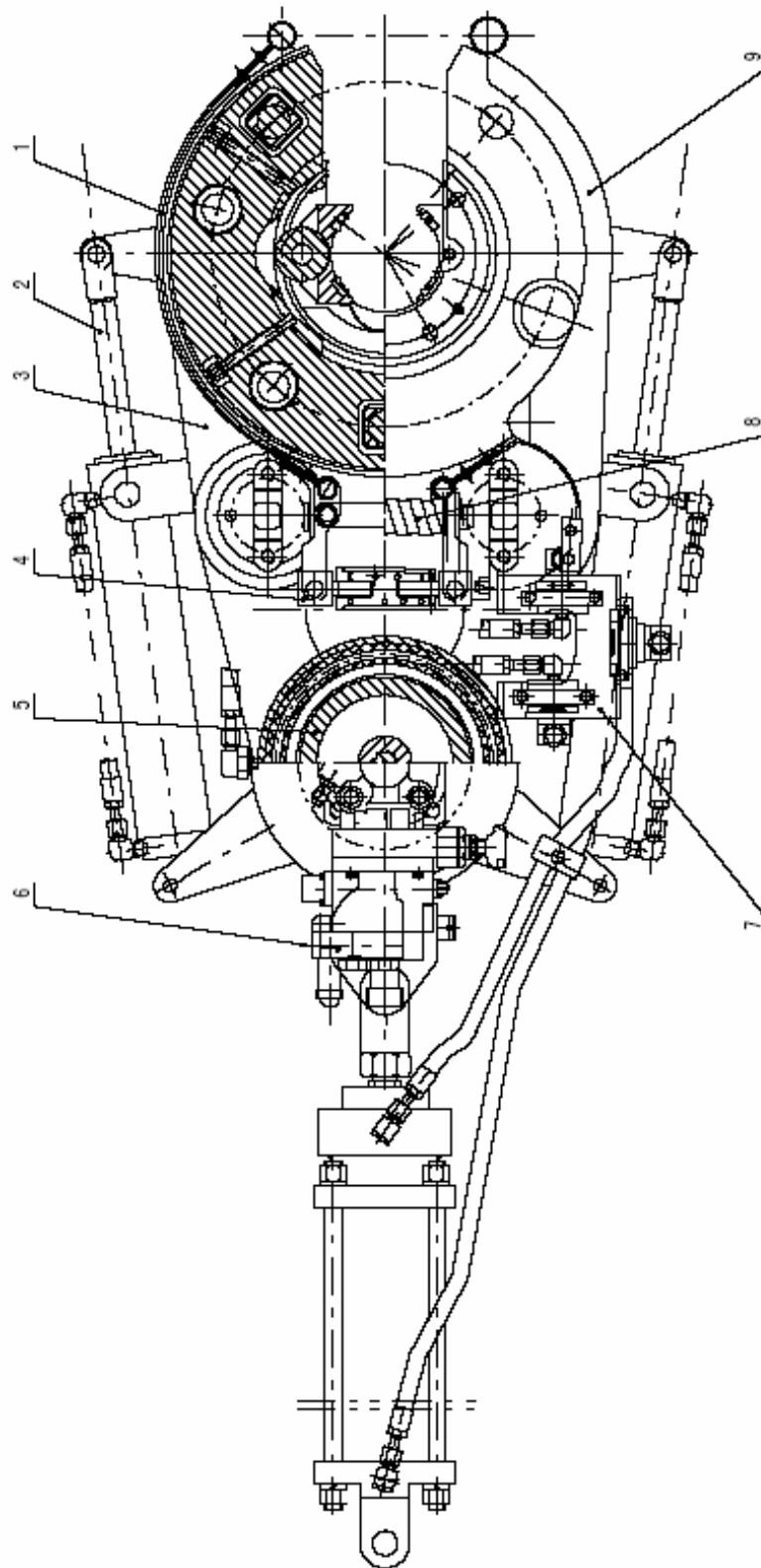


Fig.1 14.000.00 ZQ127-25 Drill Pipe Power Tong

1.14.000.00 ZQ127-25 Drill Pipe Power Tong

No.	Description	Part No.	Unit	Qty.	U.W.
1	Tong head	14.01.00A	ea	1	
2	Brake band	14.06.00	ea	1	
3	Gripping cylinder	14.04.00	ea	2	
4	Drive system	14.02.00A	ea	1	
5	Planet system	14.03.00	ea	1	
6	Hydraulic control system	14.08.00A	ea	1	
7	Air control system	14.09.00A	ea	1	
8	Suspender assy.	14.05.00B	ea	1	
9	Shield	14.07.00A	ea	1	

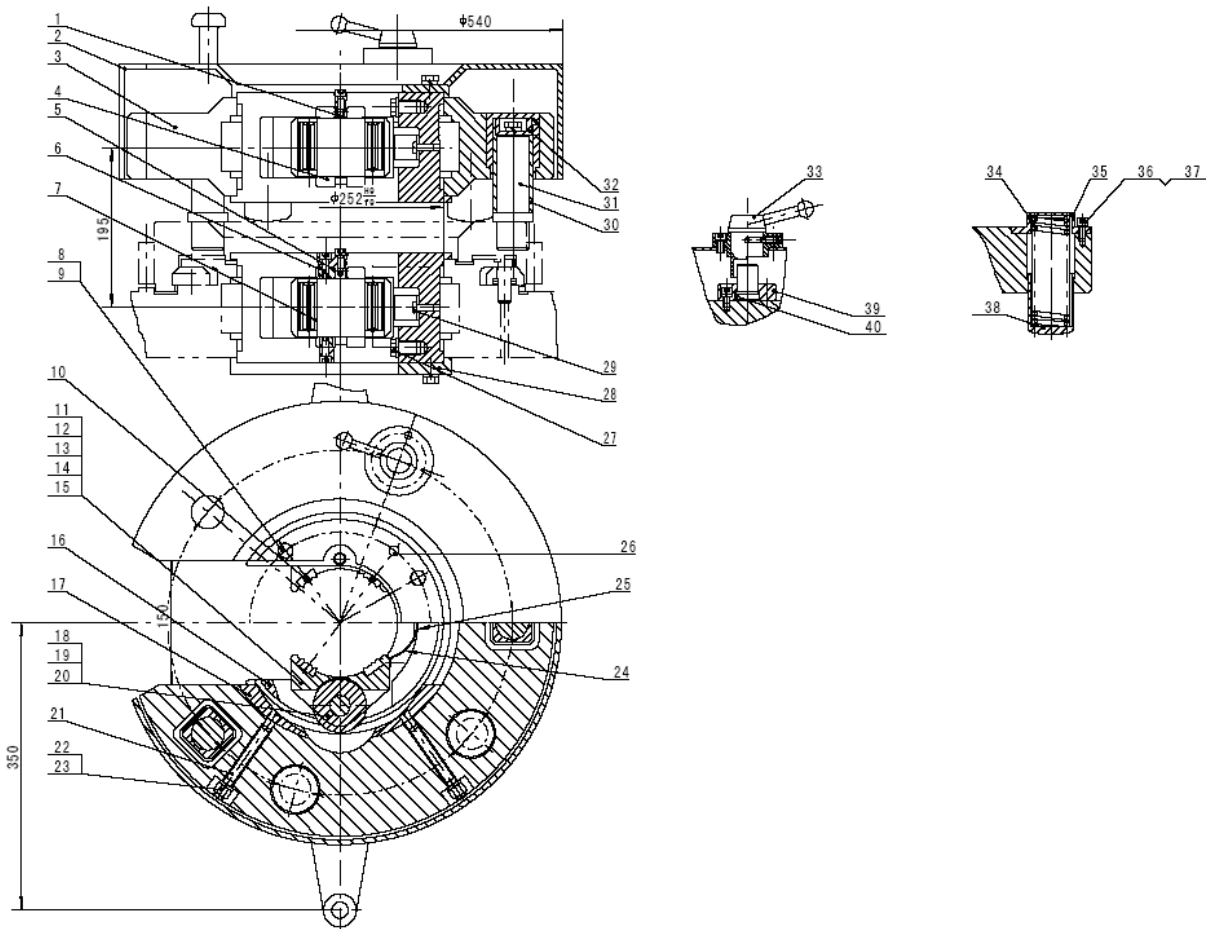


Fig. 2 14.01.00A Tong Head

2.14.01.00A Tong Head

No.	Description	Part No.	Unit	Qty.	U.W.
1	Jaw pin	14.01-01	ea	12	
2	Brake disc	14.01.01.00	ea	1	
3	Floating body	14.01-02A	ea	1	
4	Insert	14.01-03	ea	16	
5	Control screw	14.01-04	ea	4	
6	Screw M8*20	GB70.1-2000	ea	42	
7	Die	14.01-05A	ea	40	
8	Bolt M12*30	GB5783-2000	ea	11	
9	Washer 12	GB/T93-87	ea	16	
10	Pin 5*25	GB879.2-2000	ea	16	
11	Jaw (φ 127)	14.01-06	ea	4	
12	Jaw (φ 115)	14.01-07	ea	2	
13	Jaw (φ 94 105 85.7)	14.01-08(A)(B)	ea	2 each	
14	Jaw (φ 78)	14.01-09A	ea	2	
15	Jaw (φ 65)	14.01-10A	ea	2	
16	Jaw rack	14.01-11A	ea	2	
17	Cam	14.01-12B	ea	8	
18	Roller (φ 80)	14.01-13	ea	6	
19	Roller (φ 72)	14.01-14	ea	4	
20	Roller (φ 65)	14.01-15	ea	6	
21	Stud	14.01-16B	ea	8	
22	Nut M12	GB6170-2000	ea	8	
23	Washer 12	GB97.2-2000	ea	8	
24	Leaf spring	14.01-17A	ea	2	
25	Pressing plate	14.01-18	ea	2	
26	Locating pin	14.01-20	ea	4	
27	Plug screw	14.01-19	ea	1	
28	Dial disc	14.01-29A	ea	1	
29	Screw M8*2	GB65-85	ea	2	
30	Sleeve	14.01-21	ea	3	
31	Pin	14.01-22	ea	3	
32	Lock nut	14.01-23	ea	3	
33	Locating handle	14.01.02.00	ea	1	
34	Spring	14.01-24	ea	4	
35	Gland	14.01-26	ea	4	
36	Screw M8*25	GB70.1-2000	ea	12	
37	Washer 8	GB93-87	ea	22	
38	Spring sleeve	14.01-25	ea	4	
39	Pressing block	14.01-27	ea	1	
40	Pin	14.01-28	ea	1	

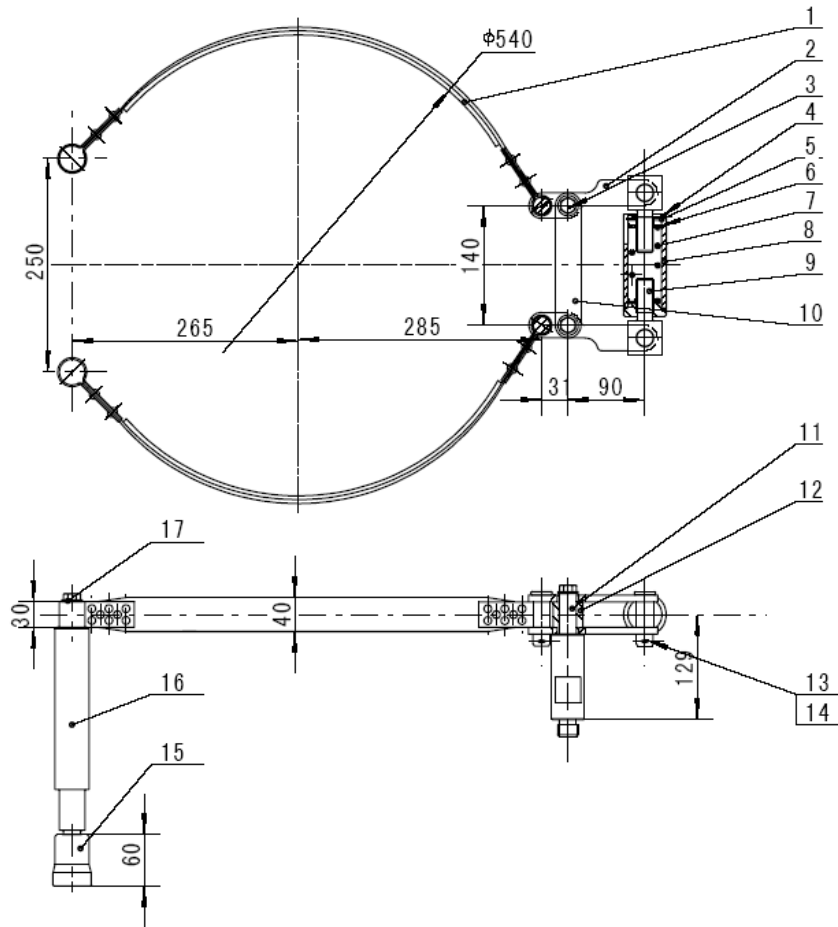


Fig. 3. 14.06.00 Brake Band

3.14.06.00 Brake Band

No.	Description	Part No.	Unit	Qty.	U.W.
1	Brake band	14.06.01.00	ea	2	
2	Con-rod	14.06-08	ea	4	
3	Bolt M12*35	GB5780-2000	ea	4	
4	Pin	14.06-07	ea	1	
5	Check ring 40	GB893.1-1986	ea	4	
6	Removable cover	14.06-02	ea	1	
7	Spring	14.06-03	ea	1	
8	Tube	14.06.02.00	ea	1	
9	Square-head bolt	14.06-04	ea	2	
10	Connection plate	14.06-01	ea	1	
11	Pillar	14.06-05	ea	2	
12	Top sleeve	14.06-09	ea	2	
13	Pin B20h11*60	GB882-86	ea	4	
14	Cotter pin 5*25	GB91-86	ea	4	
15	Support foot	14.06-10	ea	2	
16	Brake band pin	14.06-06	ea	2	
17	Washer 12	14.06-11	ea	2	

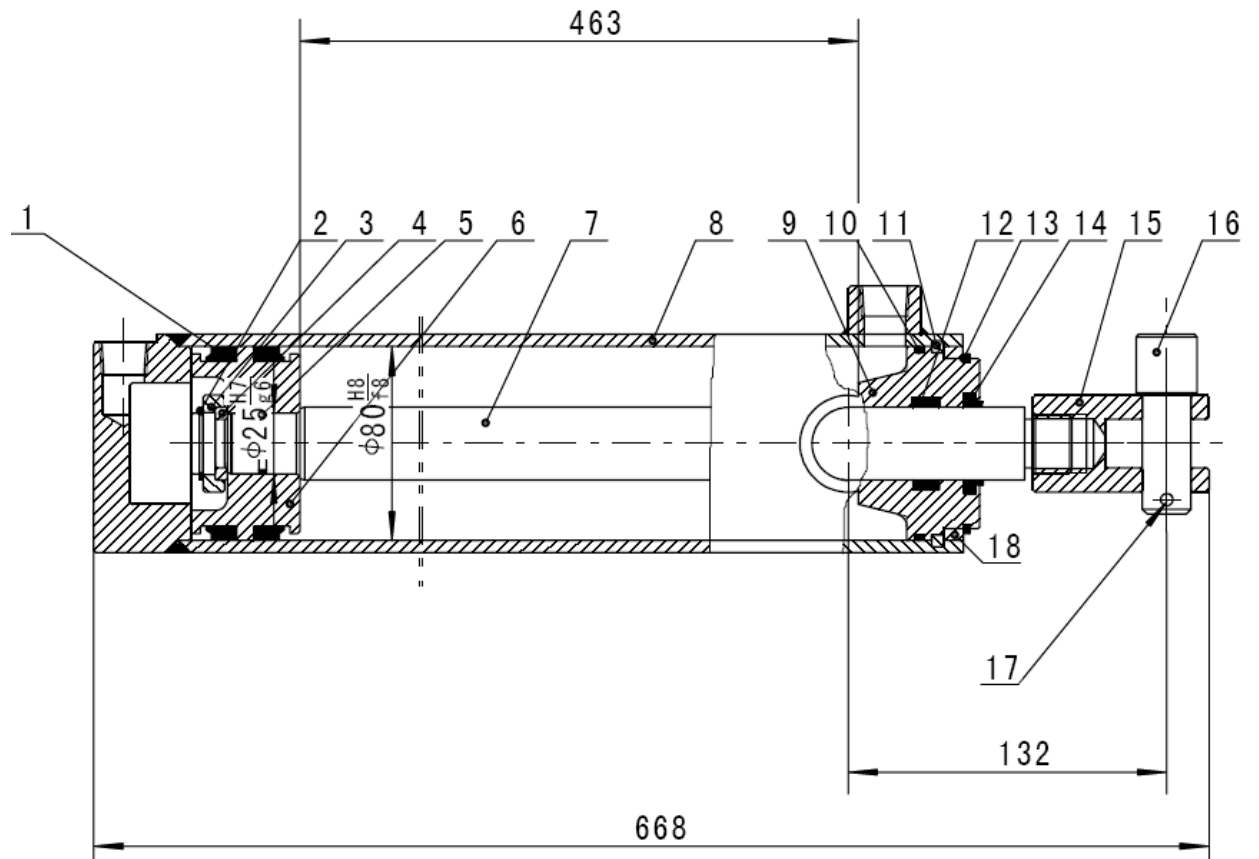


Fig. 4 14.04.00 Gripping Cylinder

4.14.04.00 Gripping Cylinder

No.	Description	Part No.	Unit	Qty.	U.W.
1	Yx seal ring D80	JB/ZQ4264-97	ea	1	
2	Stop ring 25	GB/T894.1-86	ea	1	
3	Key nut	14.04-02	ea	1	
4	Key	14.04-03	pair	1	
5	O-ring 25*2.4	JB/ZQ4224-97	Ea	1	
6	Piston	14.04-04	Ea	1	
7	Piston rod	14.04-05	Ea	1	
8	Cylinder body	14.04.01.00	ea	1	
9	Guide sleeve	14.04-06	ea	1	
10	O-ring 80*3.1	JB/ZQ4224-97	ea	1	
11	Key	14.04-07	pair	1	
12	Yx seal ring d30	JB/ZQ4265-97	ea	1	
13	Stop ring 70	GB894.1-86	ea	1	
14	Dust cap 30	GB/T10708.3-2000	ea	1	
15	Fork	14.04-09	ea	1	
16	Pin	14.04-10	ea	1	
17	Pin 4*30	GB/T91-86	ea	1	
18	Spacer sleeve	14.04-08	ea	1	

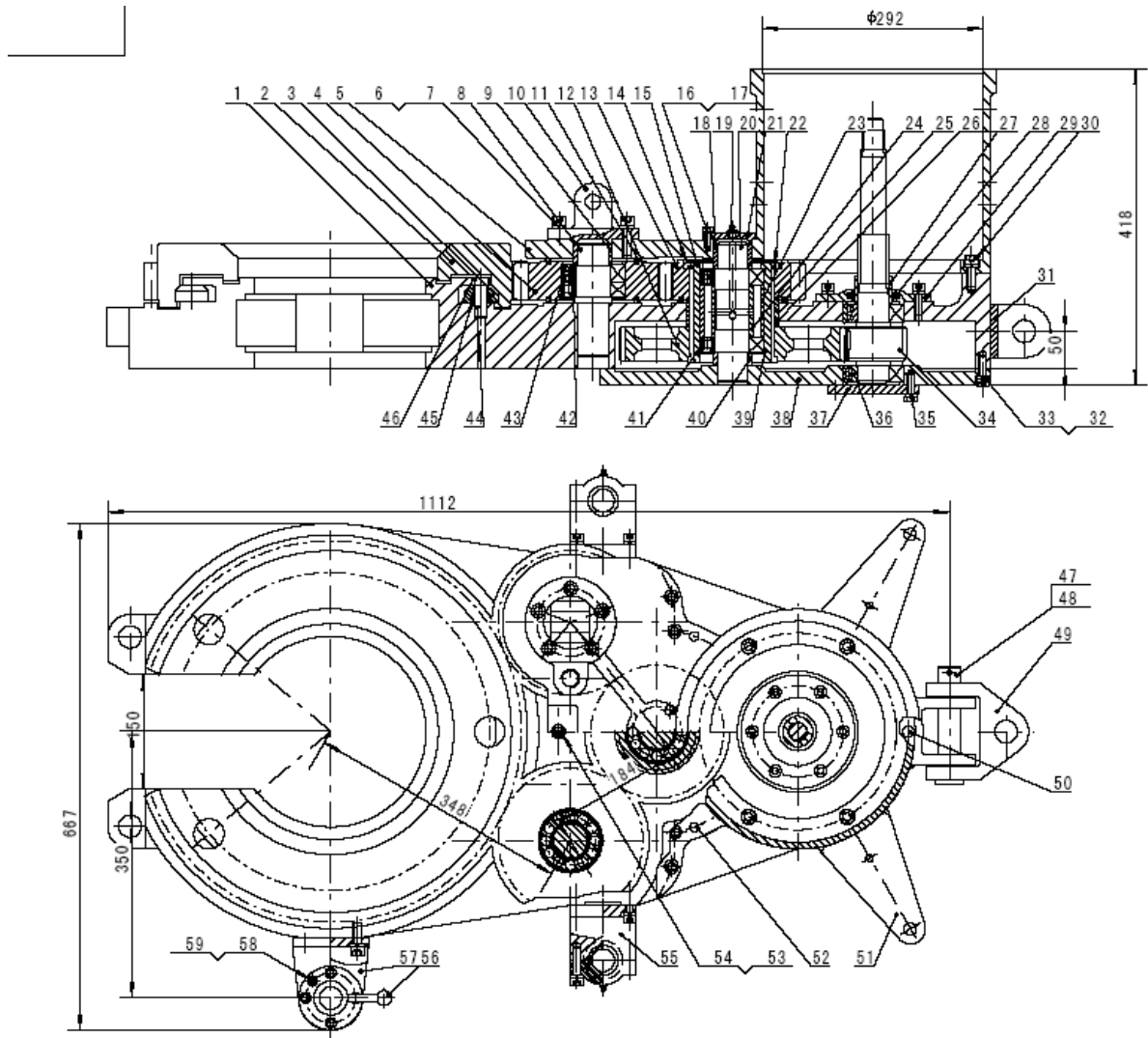


Fig.5 14.02.00A Transmission System

5. 14.02.00A Transmission System

No.	Description	Part No.	Unit	Qty.	U.W.
1	Lower case	14.02-01A	ea	1	
2	Notched gear	14.02-02 I	ea	1	
3	Roller part	14.02.01.00 II	ea	11	
4	Upper case	14.02-03A	ea	1	
5	Idle gear	14.02-04A	ea	2	
6	Screw M12*40	GB70.1-2000	ea	10	
7	Washer 12	GB93-87	ea	22	
8	Idler shaft	14.02-05A	ea	2	
9	Sleeve I	14.02-06A	ea	2	
10	Gland with ear	14.02-07A	ea	2	
11	Seal ring	14.02-08 II	ea	4	
12	Big gear	14.02-09 II	ea	1	
13	Gear	14.02-10A	ea	1	

14	Seal cover	14.02-11A	ea	1	
15	Splined sleeve	14.02-12 II	ea	1	
16	Bolt M8*20	GB5781-2000	ea	3	
17	Washer 8	GB93-87	ea	3	
18	Sleeve II	14.02-13A	ea	1	
19	Grease fitting M10*1	JB/T7940.1-95	ea	1	
20	Shaft	14.02-14A	ea	1	
21	Upper cover	14.02-15A	ea	1	
22	Stop ring 110	GB894.1-86	ea	1	
23	Outer sleeve	14.02-16A	ea	1	
24	Inner sleeve	14.02-17A	ea	1	
25	Seal ring	14.02-18A	ea	1	
26	Spacer sleeve	14.02-19A	ea	1	
27	Shaft sleeve	14.02-20A	ea	1	
28	Felt ring 50	JB/ZQ4606-86	ea	1	
29	Bearing cap	14.02-21A	ea	1	
30	Screw M8*30	GB70.1-2000	ea	11	
31	Rear fork	14.02-30A	ea	1	
32	Screw M10*30	GB70.1-2000	ea	16	
33	Washer 10	GB93-87	ea	22	
34	Gear shaft	14.01-22A	ea	1	
35	Bolt M10*30	GB5782-2000	ea	6	
36	Bearing 3508	GB/T288-1994	ea	2	
37	Lower bearing cap	14.02-23A	ea	1	
38	Gland	14.02-24A	ea	1	
39	Stop ring 85	GB93.1-2000	ea	3	
40	Sleeve III	14.02-27A	ea	1	
41	Bearing N2209E	GB/T283-94	ea	1	
42	Bearing N209E	GB/T283-94	ea	2	
43	Bearing 22209C/W33E	GB/T288-94	ea	3	
44	Pin	14.02-25 II	ea	11	
45	Bearing 51102	GB/T301-95	ea	11	
46	Screw	14.02-26 II	ea	11	
47	Pin 6.3*40	GB91-86	ea	1	
48	Pin shaft 30*150	GB882-86	ea	1	
49	Universal joint	14.02-29 II	ea	1	
50	Locating pin	14.02-20	ea	2	
51	Rear plate	14.02-31A	ea	2	
52	Pin A10*40	GB117-86	ea	2	
53	Screw M12*70	GB70-85	ea	1	
54	Sleeve	14.02-28 II	ea	1	
55	Support for gripping cylinder	14.02.02.00A	ea	2	
56	Locating handle	14.01.02.00A	ea	1	
57	Reset support	14.02.03.00A	ea	1	
58	Screw M8*25	GB70.1-2000	ea	6	
59	Washer 8	GB93-87	ea	6	

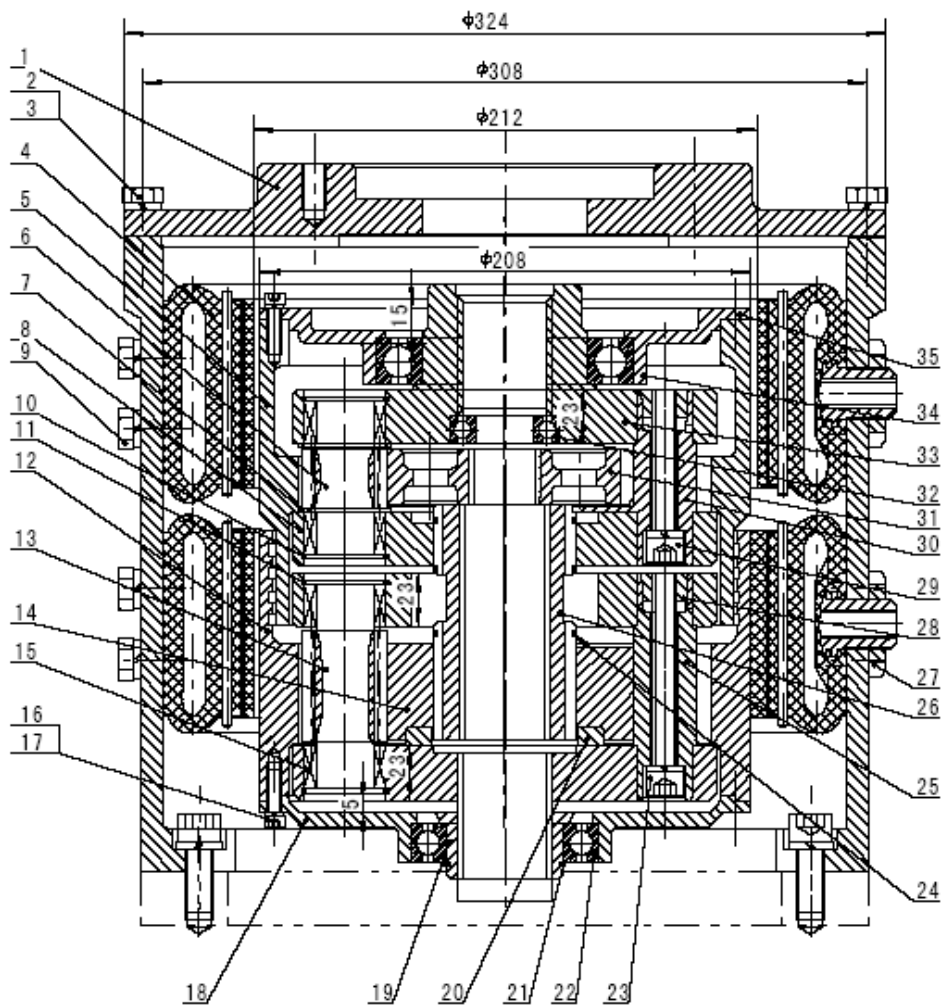
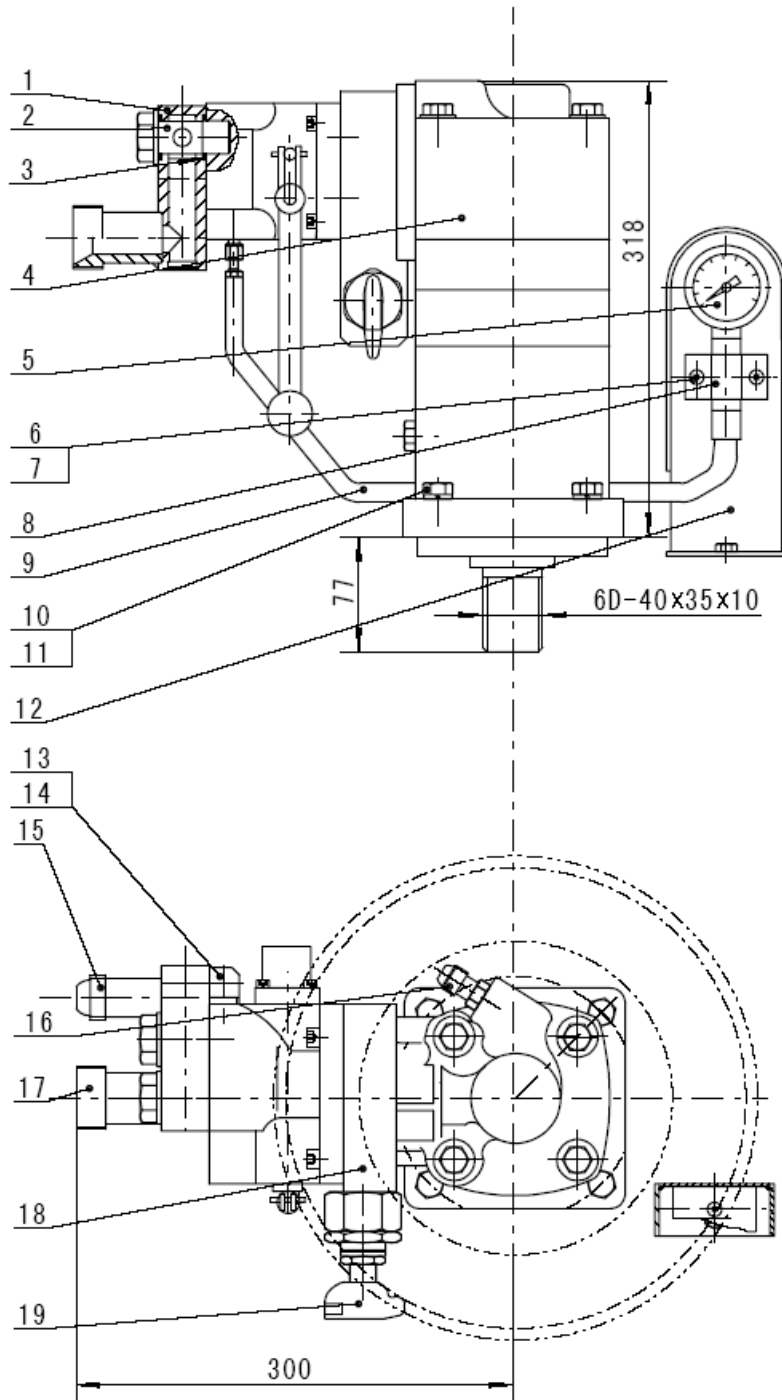


Fig.6 14.03.00 Planet System

6.14.03.00 Planet System

No.	Description	Part No.	Unit	Qty.	U.W.
1	Valve panel	14.03-01B	ea	1	
2	Bolt M10*30	GB/T5782-2000	ea	6	
3	Washer 10	GB/T93-87	ea	38	
4	Air clutch	07.02.04.03.00	ea	2	
5	Upper annular gear	14.03-02	ea	1	
6	Upper planet gear	14.03-03	ea	1	
7	Copper gasket	14.03-04	ea	16	
8	Flange II	14.03-05	ea	1	
9	Bolt M10*16	GB5781-2000	ea	24	
10	Stop ring 35	GB893.1-86	ea	16	
11	Flange III	14.03-06	ea	1	
12	Lower annular gear	14.03-07	ea	1	

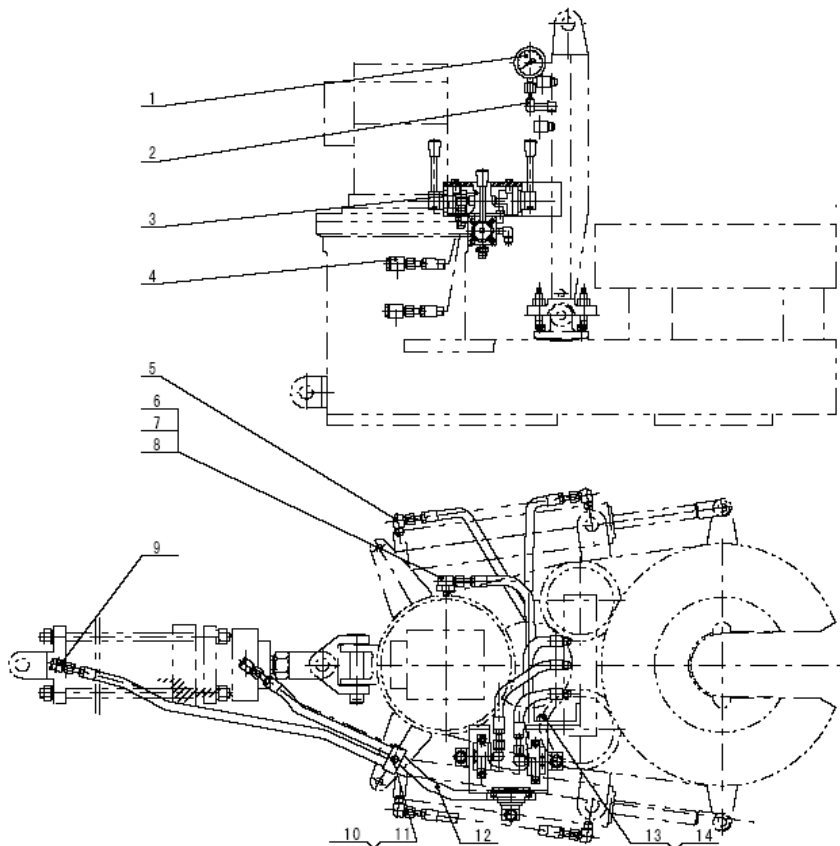
13	Lower planet gear	14.03-08	ea	4	
14	Lower sun gear	14.03-09	ea	1	
15	Bearing 4084103	GB289-64	ea	16	
16	Screw M6*20	GB/T70.1-2000	ea	16	
17	Washer 6	GB93-87	ea	16	
18	Support ring	14.03-12	ea	1	
19	Flange IV	14.03-11	ea	1	
20	Copper gasket	14.03-19	ea	1	
21	Stop ring 50	GB894.1-86	ea	1	
22	Bearing 110	GB276-94	ea	1	
23	Screw M10*85	GB70.1-2000	ea	4	
24	Stop ring 60	GB894.1-86	ea	3	
25	Flange pin	14.03-13	ea	4	
26	Splined sleeve	14.03-14	ea	1	
27	Nut M22*1.5	GB812-88	ea	2	
28	Inner cone sleeve	14.03-18	ea	8	
29	Screw M10*65	GB/T70.1-2000	ea	4	
30	Flange pin	14.03-15	ea	4	
31	Upper sun gear	14.03-16	ea	1	
32	Bearing 105	GB276-94	ea	1	
33	Flange I	14.03-17B	ea	1	
34	Bearing 114	GB276-94	ea	1	
35	Upper seal ring	14.03-10	ea	1	



7.14.08.00A Hydraulic Control Assembly

7.14.08.00A Hydraulic Control Assy.

No.	Description	Part No.	Unit	Qty.	U.W.
1	Oil in & out valve panel	14.08.01.00A	ea	1	
2	Hinged bolt	14.08-01A	ea	2	
3	O-ring 30*3.1	JB/ZQ4224-97	ea	4	
4	Hydraulic motor	J6K-625	ea	1	
5	Pressure gauge	YN60- I	ea	1	
6	Nut M5	GB41-86	ea	2	
7	Screw M5*16	GB818-2000	ea	2	
8	Hose clamp	24.600-07	ea	1	
9	Hose 6.3 I -600	JB/ZQ4427-86	ea	1	
10	Screw M12*40	GB5781-2000	ea	4	
11	Washer 12	GB93-87	ea	4	
12	Gauge guard	14.08.02.00A	ea	1	
13	Joint	24.400-03	ea	1	
14	Seal gasket	24.600-09	ea	2	
15	Protective cap M30*1.5		ea	1	
16	Oil spill joint	24.600-13	ea	1	
17	Protective cap M40*2		ea	1	
18	Connection valve panel	14.08.03.00A	ea	1	
19	Relief valve 溢流阀	DBDH20K1020	ea	1	



8.14.09.00A Air Control Assembly

8.14.09.00A Air Control Assy.

No.	Description	Part No.	Unit	Qty.	U.W.
1	Pressure gauge	Y-60	ea	1	
2	Gauge joint	01.08.02.00MA	ea	1	
3	Air valve panel assy.	14.09.01.00A	ea	1	
4	Quick release valve	14.09.02.00A	ea	2	
5	Tee joint	14.09-01A	ea	2	
6	Seal ring	24.650-03	ea	2	
7	Coupling	56.340-02	ea	2	
8	Rubber washer 12	HG4-330-66	ea	2	
9	Angle joint	A01.5000-003	ea	7	
10	Bolt M10*65	GB5780-2000	ea	1	
11	Clip	01.08-06MA	ea	1	
12	Air hose	HG4-761-74	ea	1	
13	Bolt M12*35	GB5780-2000	ea	2	
14	Nut M12	GB6170-2000	ea	2	

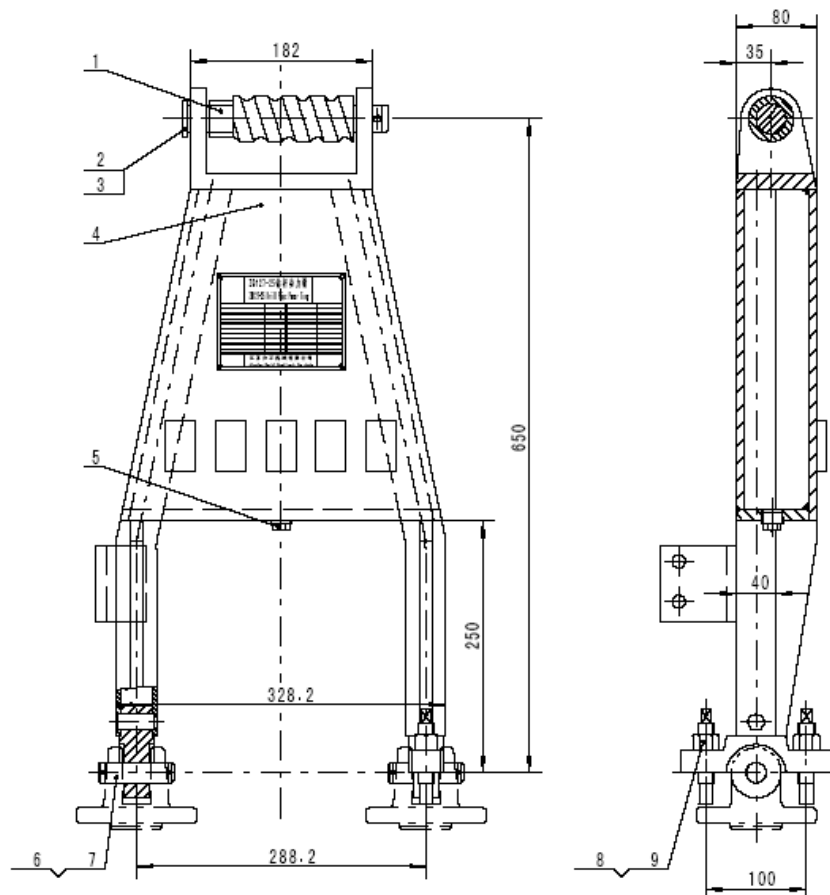


Fig.9 14.05.00B Suspender Assembly

9.14.05.00B Suspender Assembly

No.	Description	Part No.	Unit	Qty.	U.W.
1	Screw rod	14.05-01A	ea	1	
2	Suspension shaft	14.05-02A	ea	1	
3	Pin 6.3*40	GB/T91-2000	ea	1	
4	Suspender	14.05.01.00B	ea	1	
5	Plug NPT1/2	JB/ZQ4449-86	ea	1	
6	Pin 4*30	GB/T91-2000	ea	4	
7	Pin with hole	14.05-07	ea	4	
8	Adjustment screw	14.05-05	ea	2	
9	Nut M16	GB/T6170-2000	ea	4	

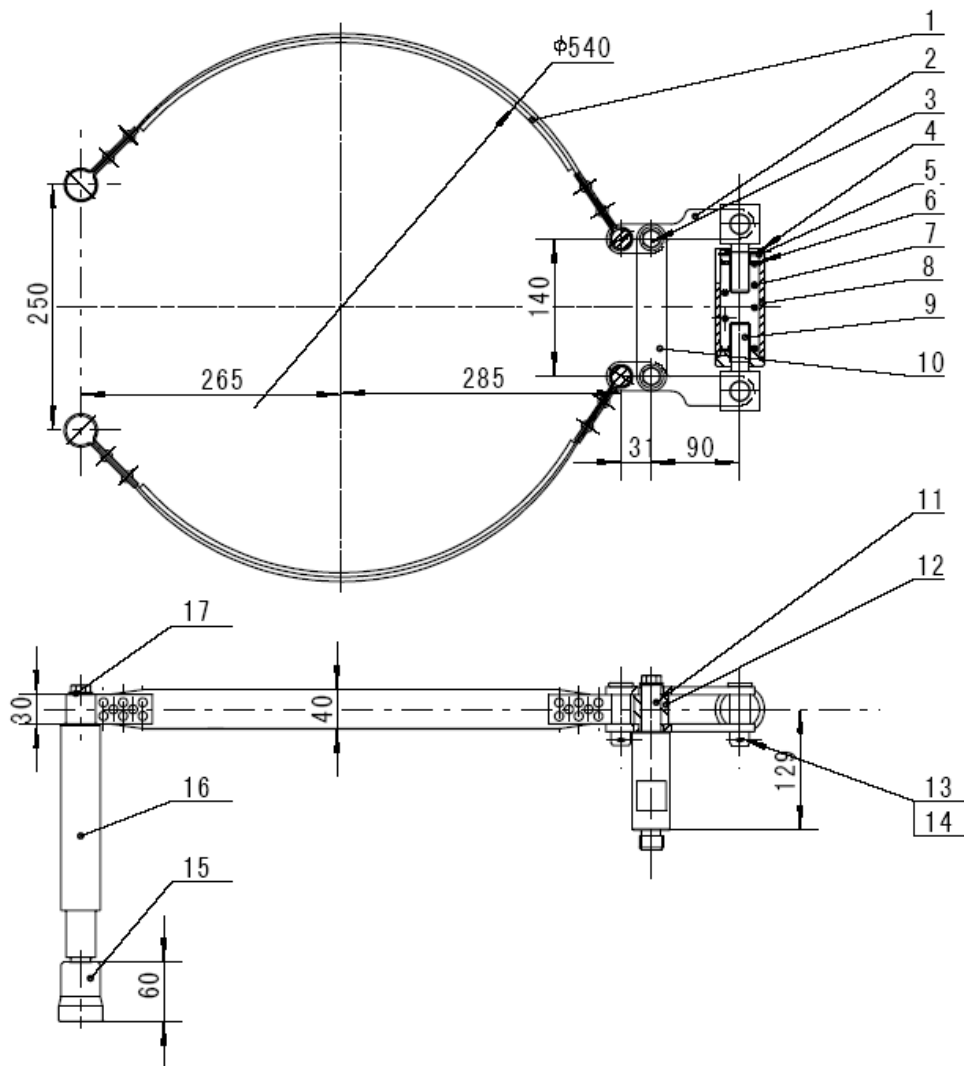


Fig. 10 14.07.00A Shield

10.14.07.00A Shield

No.	Description	Part No.	Unit	Qty.	U.W.
1	Bolt M8*16	GB5780-2000	ea	4	
2	Washer 8	GB93-87	ea	4	
3	Left shield	14.07.01.00A	ea	1	
4	Right shield	14.07.02.00A	ea	1	